



# Model Train Catalogue

Versions 2.08 and 2.08E

Installation Instructions

Errors and Omissions Excepted: every care has been taken to ensure that all information in this document is present and correct. If any error or omission is found, please let us know and it will be corrected as soon as possible after verification - email to: [support@modeltraincatalogue.com](mailto:support@modeltraincatalogue.com).

Copyright Model Train Catalogue - ©October 2022

## Anti-Virus Safety

The creators of Model Train Catalogue Software are very aware of the safety necessary to ensure that downloaded programs are free of any viruses, spyware or any other types of malicious infections.

Model Train Catalogue is designed not to be able to carry any viruses, spyware or any other types of malicious infections and is double-checked using McAfee Anti-Virus software. The Model Train Catalogue Site has been 'White Listed' by Symantec (Norton)

Model Train Catalogue software is safe to download and install as long as it is downloaded from [www.modeltraincatalogue.com](http://www.modeltraincatalogue.com) or [www.modeltraincatalogue.co.uk](http://www.modeltraincatalogue.co.uk).

## Windows 7/8/10 Warnings (Windows 11 see foot of page 2 and page 3)

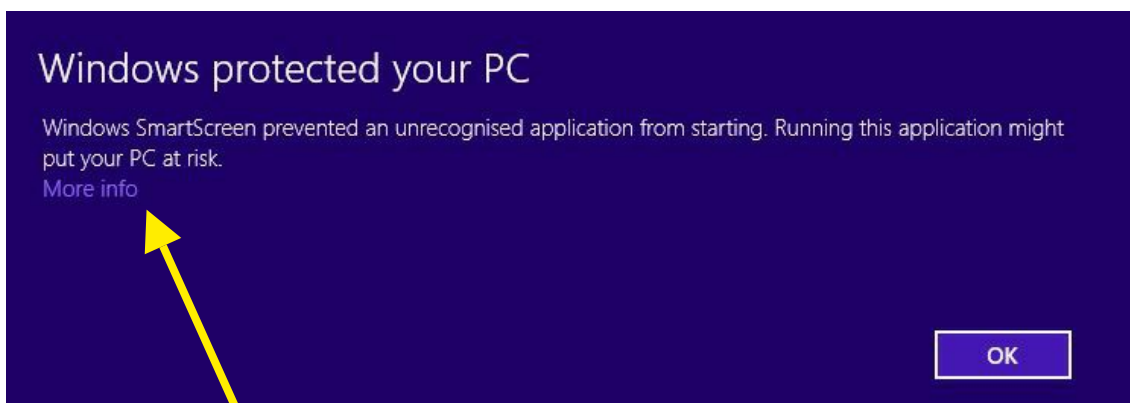
When downloading Model Train Catalogue software some browsers issue warnings when software packages are unknown to them.

Typically the following warning can be given:

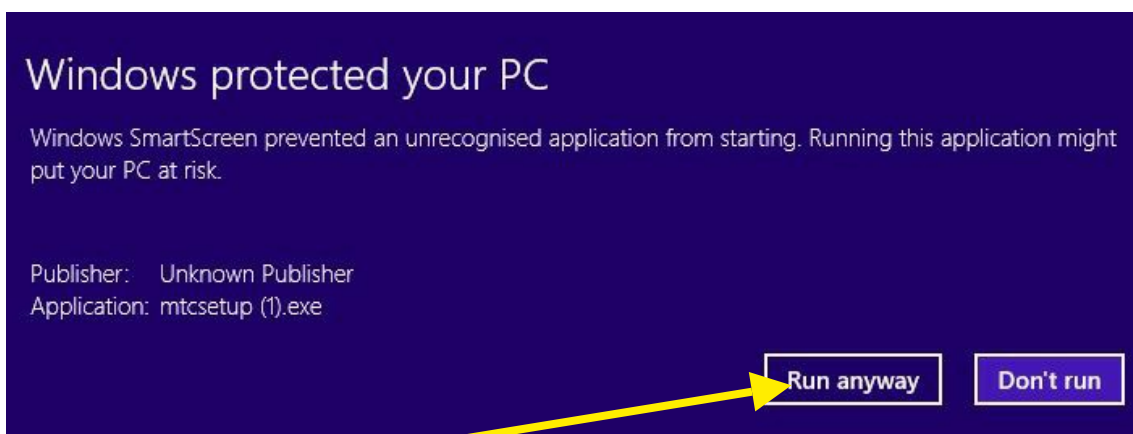


Either Click on the 'X' or use the 'View downloads' button to install the software. The downloaded files should be mtcsetup.exe or mtcesetup.exe. If your download file is not either of these, rename it. With the latest Microsoft security it can be renamed and MTC cannot control this.

## Windows 8.1/10/11 Extra Warning



Click on 'More Info' and this appears.....



Click on 'Run anyway'

## Windows 8.1/10 User Account Control

Click 'OK'

Note:

In Windows 10 build 1709 (and after), if using 'Controlled folder access', the setup file will have to be allowed through by using 'Allow an app through controlled folder access' feature to be found in Settings under Windows Defender's Virus & threat protection settings.



## Windows XP Warning

When running mtcsetup.exe, the Model Train Catalogue software installer, some computers issue

warnings when software package publishers are unknown to them.

Typically the following warning can be given:



## Mcafee SiteAdvisor Warning

When running mtcsetup.exe, the Model Train Catalogue software installer, some computers issue

warnings when software package publishers are unknown to them.

Typically the following warning can be given:



**Windows 11 Installations** are a little more challenging because of its extra security.

Sometimes the MTC setup file arrives in the Downloads folder with a peculiar name - such as '**undetermined.download**' or similar.

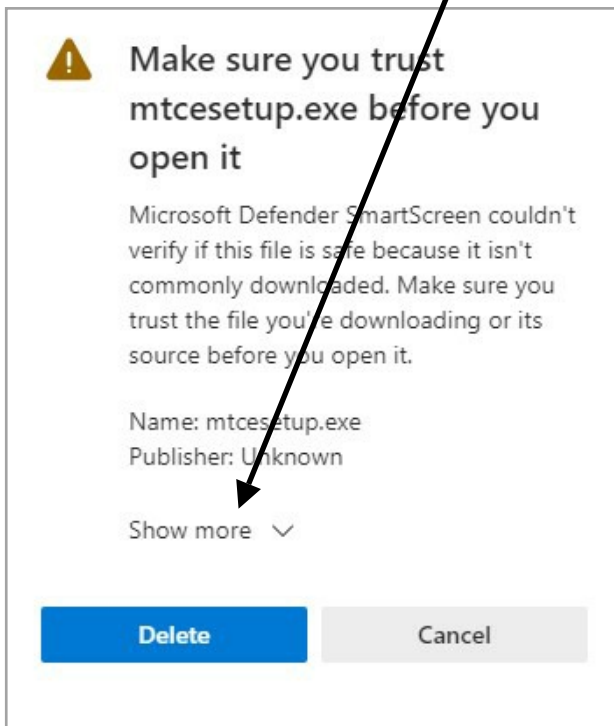
After you decide to keep this file it will need to be renamed.

Right-Click on it and from the menu select **Rename**. Rename the file to mtcsetup.exe. Also, it can make you rename the left part in front of the dot and then the right part after the dot separately. As long as the ending after the dot is exactly '**exe**' all will work when the installation is started with a Double-Click

## Windows 11 Download Control

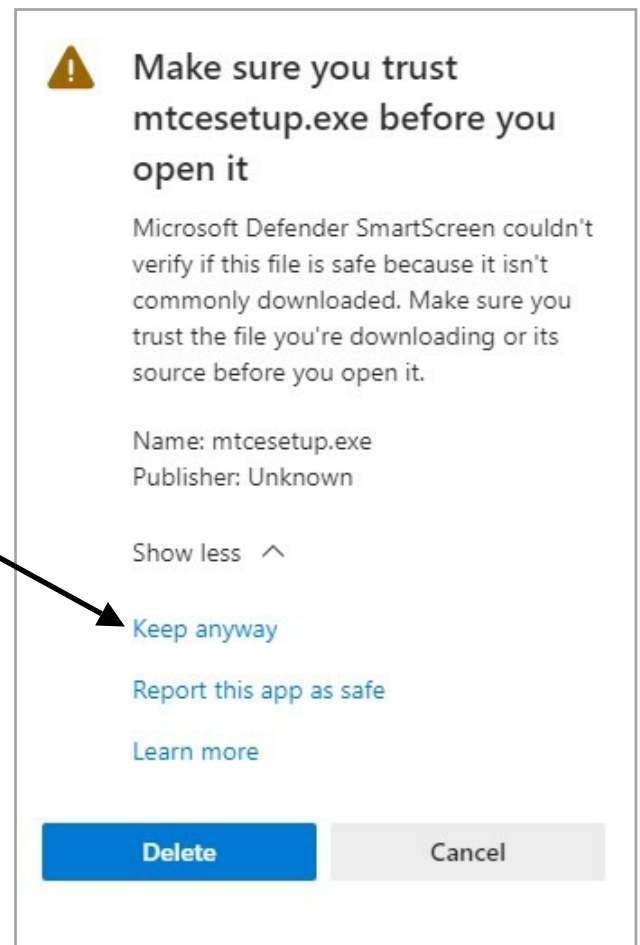
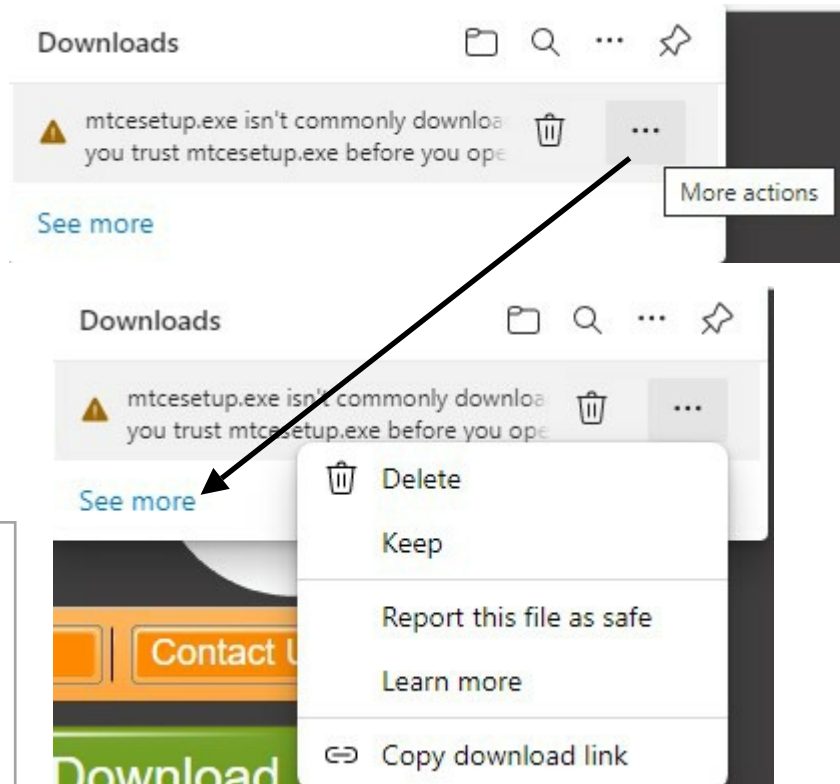
Windows 11 has higher security controls to get through. If this window appears Click on the three dots to get this screen (The dots can appear when the mouse cursor is placed in this window in some browsers).

Click on 'Keep' to get this screen



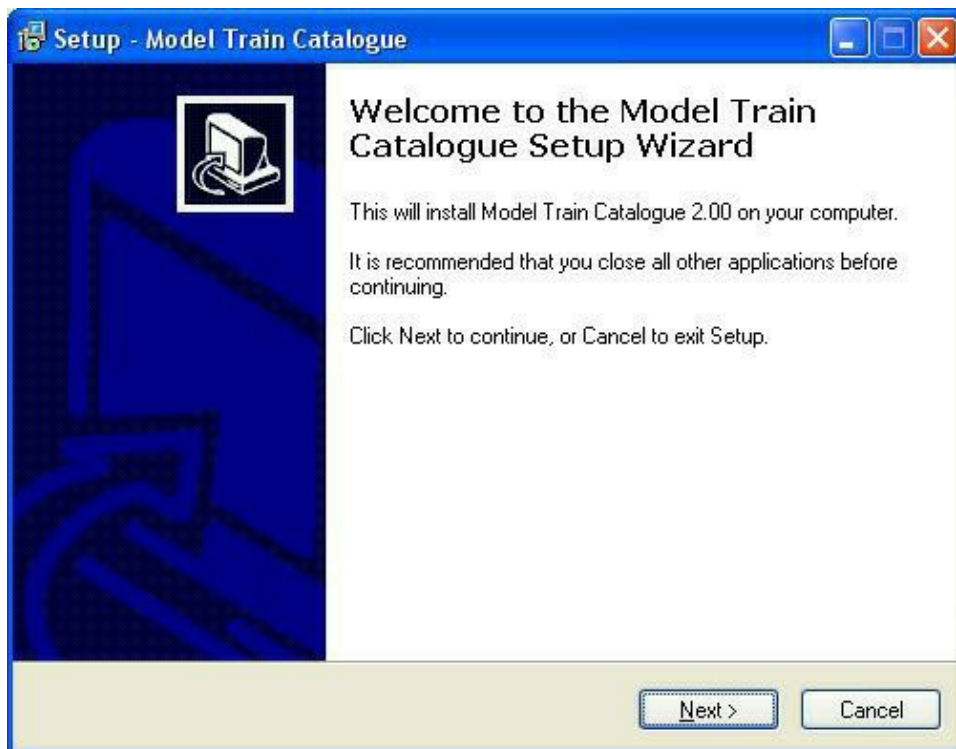
Click on 'Show more' to get this screen

Click on 'Keep Anyway' allow it to download to the downloads folder. Note that some browsers allow you to run this installation file from the browser download window itself.

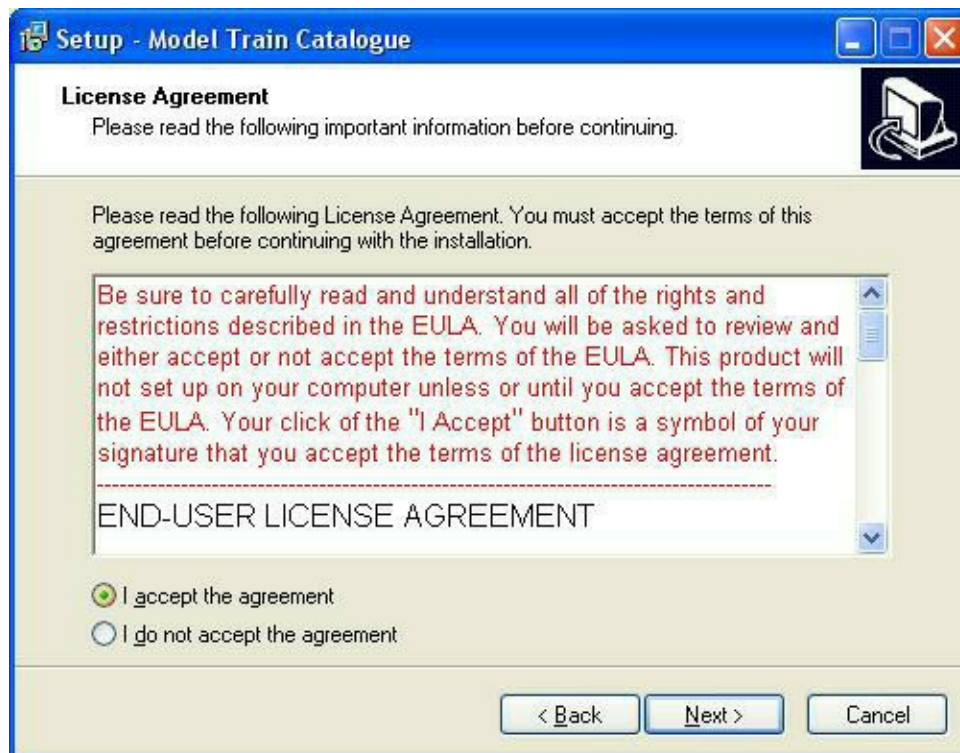


Now the MTC installation can begin by Double-Click the installation file.

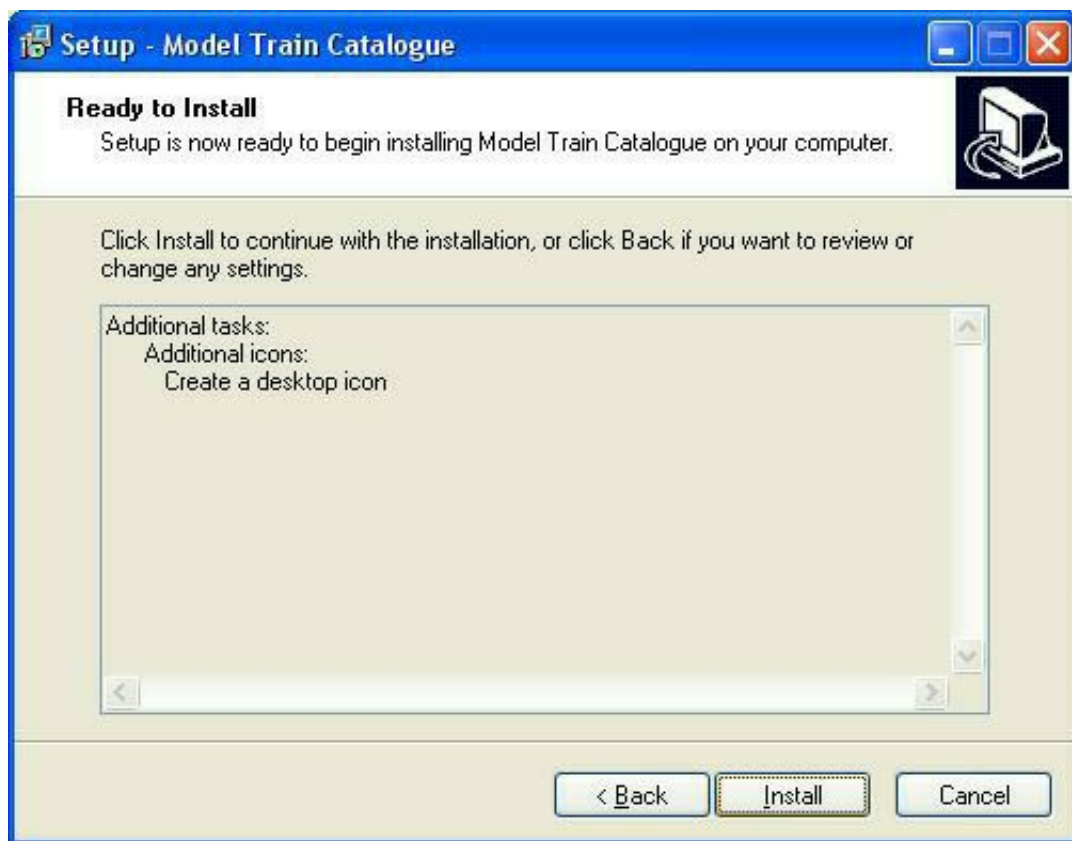
Note that different versions of Windows can have slightly different screen cosmetics but the process is essentially the same. Windows 11 cosmetics can appear slightly different.



Click the 'Next' button.



If the End User Licence Agreement is acceptable, Click Acceptance and then Click the 'Next' button.



Click the 'Install' button and the Model Train Catalogue will install.



Click the 'Finish' button and the Model Train Catalogue is ready to use.